

SAMSON USA

General Catalog



Intelligent Valve Engineering from a Single Source

SMART IN FLOW CONTROL

- 1 SAMSON USA Executives
- 2 SAMSON Group
- 3 SAMSON USA
- 4 SAMSON Subsidiaries
- 5 SAMSON Subsidiaries Cont.
- 6 SAMSON History
- 7 SAMSON History Cont.
- 8 Additive Manufacturing
- 9 Product Management
- 10 Machining
- 11 Machining Equipment
- 12 Assembly
- 13 Assembly Cont.
- 14 Quality Assurance
- 15 Quality Assurance Cont.
- 16 Warehouse
- 17 Warehouse Cont.
- 18 After Sales Service & Maintenance
- 19 After Sales Service & Maintenance Cont.
- 20 Products & Industries
- 21 Industries
- 22 SAMSON at a Glance



Tariq Farooqui
President, CEO, & CFO

Tariq Farooqui is the President, CEO and CFO of SAMSON USA. He is responsible for all departments and the profitability of the Company. He first joined SAMSON in July of 1999 as the Deputy Director of the Production division for SAMSON USA. Later, he transitioned to the CFO and then was promoted to his current role in 2014.



Ryan Holmelin
CMO & VP of Sales

Ryan Holmelin is SAMSON USA's Chief Marketing Officer and Vice President of Sales. Ryan's oversight includes marketing, sales, corporate communication, and enhancing the SAMSON Customer experience. Ryan joined SAMSON in September 2017 after 12 years in the process instrumentation industry. He held various leadership roles that spanned North America and Europe before moving back to Texas to join the SAMSON team.



James Evans
COO

James Evans is the COO of SAMSON Controls and is responsible for the production and supply chain in the North American region. He also oversees development. Before being named COO in 2014, James was a SAMSON employee for 17 years and served as the Quality Assurance Manager at SAMSON USA in Baytown, TX.

SAMSON GROUP



SAMSON AKTIENGESELLSCHAFT - GLOBAL HEADQUARTERS

The SAMSON Group is comprised of SAMSON AG, global SAMSON sales subsidiaries, and ten manufacturing companies that provide flow control solutions to leading processing companies worldwide. SAMSON Group custom manufactures, sells, and distributes high quality, modular linear globe, rotary plug, ball, and butterfly control valves, in standard and exotic metals, sizes ranging from micro-flow to 100 inch and larger for water, process fluids, slurries, vapor, steam, industrial gas, and cryogenic gas applications in oil & gas, petrochemical, nuclear & traditional power, industrial chemical, household & personal chemical, food & beverage, pharmaceutical, solar thermal, mining & metals and HVAC industries.

Using HART, Foundation Fieldbus, and Profibus technology, SAMSON positioners and instrumentation are capable of integrating with control systems to supply both control and diagnostics. SAMSON Group also manufactures pneumatic and electronic control valve accessories such as positioners, actuators, solenoid valves, limit switches, boosters, noise reducers, and diagnostic control systems. Located across the globe, SAMSON Group provides customers with solutions to controlling the flow of fluid processes.

SAMSON USA

As a part of the sales and production team, SAMSON USA is proud to provide to customers in North American local sales, local service and local manufacturing. SAMSON develops and manufactures the highest quality products to reduce the customers' process down time and maintenance costs. We at SAMSON Controls continue that mission by providing our customers those high quality products in North America.



SAMSON USA Headquarters - Baytown, TX

- Production
- Marketing
- Inside Sales
- After Sales
- Controlling

Projects and Key Account Office - Houston, TX

- Product Management
- Project Engineering
- Key Account Management

SAMSON SED - Chicago, IL

- Assembly
- Sales
- Inside Sales



Geismar, Louisiana

- Sales, Service, Inside Sales, & Assembly



Cleveland, Tennessee

- Sales, Assembly, & Service

SAMSON SUBSIDIARIES

SAMSON Pfeiffer

The high-quality control, butterfly, and ball valves with homogenous PTFE and PFA linings can be used in a wide variety of applications. The product portfolio also includes metal butterfly and ball valves, turnkey pigging systems and their components as well as sampling systems.

SAMSON Ringo

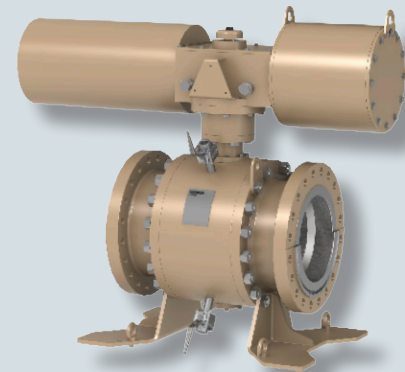
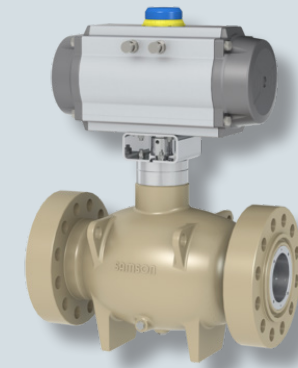
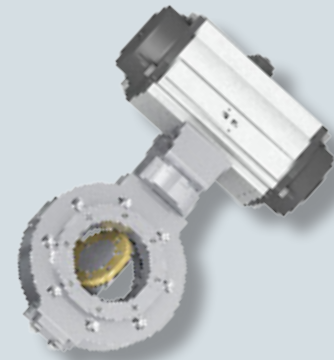
The valve specialist is well known for its large valves with high pressure ratings specifically designed for the oil and gas sector and power stations. The company's wide product range includes ball valves, globe control valves, gate, globe, and check valves, choke valves, axial flow valves as well as special valves, such as double block-and-bleed or subsea valves.

SAMSON SED

SED specializes in the development, manufacture and distribution of diaphragm valves, seat valves and variable area flow meters. In addition, SED offers a wide range of mechanical and electric accessories for monitoring and control that is perfectly tailored to the valves. Valve bodies and actuator components are made of high-quality metals and plastic materials.

SAMSON Starline

Forged steel ball valves in sizes NPS ¼ to 36 and ANSI Class 150 to 2500 as well as in API A6 pressure ratings are used in special applications, such as upstream, cryogenic, and high-temperature service. Thanks to superior quality, STARLINE is a top supplier to all major oil and gas companies as well as EPC contractors.



SAMSON Air Torque

The world leader in pneumatic rotary actuators manufactures actuators for all kinds of rotary or quarter-turn valves. Technical highlights provided by AIR TORQUE actuators include external travel stop adjustment and the involute gearing of the rack and pinion, which converts the linear motion into a smooth rotary movement.

SAMSON Cera

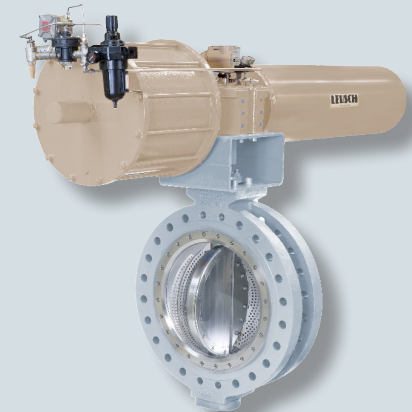
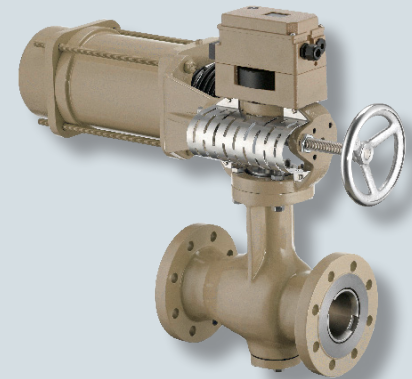
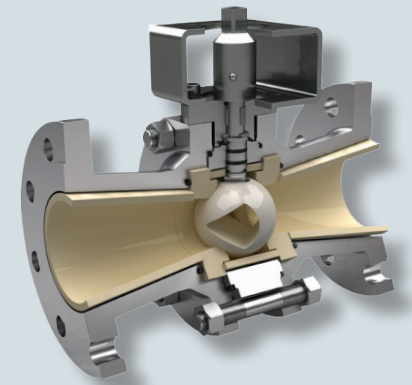
High-performance ceramic materials provide solutions wherever standard valves reach their limits in resistance to wear, corrosion, and high temperatures. CERA SYSTEM specializes in ball and sliding disk valves as well as pipe components with ceramic linings. High-precision components made to meet specific customer requirements round off the product range.

SAMSON Vetec

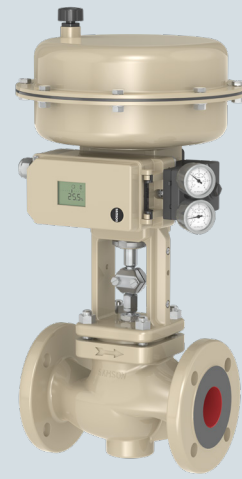
VETEC's MAXIFLUSS valves combine the advantages of conventional control valves, butterfly valves, and ball valves. Their universal design allows them to be used in standard and critical applications. Thanks to the eccentric design of the rotary plug, it only comes into contact with the valve seat when the valve is completely closed. This means that the valves can control at high rangeability.

SAMSON Leusch

High-performance valves up to three meters in pipe diameter are the specialty of SAMSON LEUSCH. Control and shut-off butterfly valves, ball valves, and segmented ball valves with soft or metal seals can be used in both extremely high and extremely low temperatures and at high pressures: from -196 to +1000 °C, in pressure ratings up to PN 420/Class 2500.



SAMSON HISTORY



1907: SAMSON was founded in Mannheim, Germany

1968: SAMSON introduces Type 3241 valve

1992: SAMSON USA was opened

2002: SAMSON acquires controlling interest in Starline

2007: SAMSON celebrates 100 years of innovation

2013: SAMSON acquires controlling interest in Ringo Valvulas

1916: SAMSON moves to present day headquarters in Frankfurt where the original building still stands today.

1989: SAMSON acquires controlling interest in VETEC Ventiltechnik GmbH

1995: SAMSON acquires controlling interest in Pfeiffer Armaturen

2002: SAMSON acquires controlling interest in Leusch

2012: SAMSON acquires controlling interest in Cera System

2017: SAMSON acquires controlling interest in SED Flow Control GmbH and Unveils the Rolf Sandvoss Innovation Center

ADDITIVE MANUFACTURING



The continuous improvement of additive manufacturing techniques for producing metal components has opened new doors for uses in almost every industry. In the control valve industry, material quality has improved to the point where additively manufactured metals may be certified as a pressure bearing components. Additive manufacturing has advantages in certain applications over more traditional manufacturing techniques. To meet these needs SAMSON is developing and qualifying materials under the name SPBF, specifically for the manufacturing of metallic components.

Control valves are used in a broad range of industries and applications. These applications present challenges within the valve, such as generating an extreme amount of noise or causing damage to internal components. Various internal component designs have been used to mitigate these effects. With the proliferation of additive manufacturing, SAMSON's research and development engineers are now able to utilize more complex designs that were previously considered impossible to manufacture and employ these designs to further prolong the life of the valve, as well as reduce noise emissions.

Beyond just intricate internal component designs, additive manufacturing also provides many advantages in material availability as well. Traditional manufacturing techniques generally require high volume to be cost effective; manufacturing one single component can be very costly, leading to reduced profitability and uncompetitive pricing. Additive manufacturing allows SAMSON to produce small batch or even single components at a much-reduced cost and very quick turnaround time without disrupting higher volume production lines. This affords SAMSON a much greater range of options to offer individualized, specialized components as well as single replacement components for discontinued product lines.

PRODUCT MANAGEMENT

The Product Management team plays a key role in the overall function of SAMSON USA. They undertake a variety of responsibilities that ultimately help to streamline our process from start to finish within every project. Their primary responsibility is to provide second level engineering support for the sales & fulfillment teams. In addition,

Our product management team has a very detailed knowledge of our SAMSON products which helps to streamline product specification from the quotation stage to the product delivery, as well as with after sales support. Based on this knowledge, the product management team conducts various levels of in depth trainings for our customers, sales channels, and our inside sales engineering team. They are also responsible for providing application support for the multitude of applications and industries that SAMSON services.

Other primary responsibilities include providing guidance and support in the creation of marketing literature based on a variety of products, applications, and industries. Lastly, they aid in developing a business strategy while also guiding inventory management projects to improve product availability. This simultaneously helps to improve sales while providing better support for our customer base.



MACHINING

Producing the world's best control valves requires an investment in state of the art manufacturing technologies and processes. Over the years SAMSON has pioneered many products and manufacturing methods that are now industry standards. We continue to push the envelope by developing, evaluating, testing, and implementing novel manufacturing techniques that produce product with unique qualities and unparalleled quality.

We utilize highly automated production cells, a modular design, shared code, and specially designed tools that aid in rapid setups. We can quickly and effectively change over a machine from project work to produce those "hot" specialty items needed in your plant's turnaround. Additionally, our flexible manufacturing systems allow for "lights out" operation and help to make sure capacity is available when it's needed.

SAMSON's global approach to production ensures that products are relevant for the local market and meet the local laws, specifications, and regulations at the point of sale. We maintain a full featured machining park in Baytown, Texas to produce the full line of products that SAMSON sells in North America. We can and do source right here in the United States to fulfill Buy America Act and Made in America procurement requirements.

Our focus on technological innovation and our commitment to our customers long term means we have invested in the very best equipment and can offer industry leading quality and industry leading turnaround times.

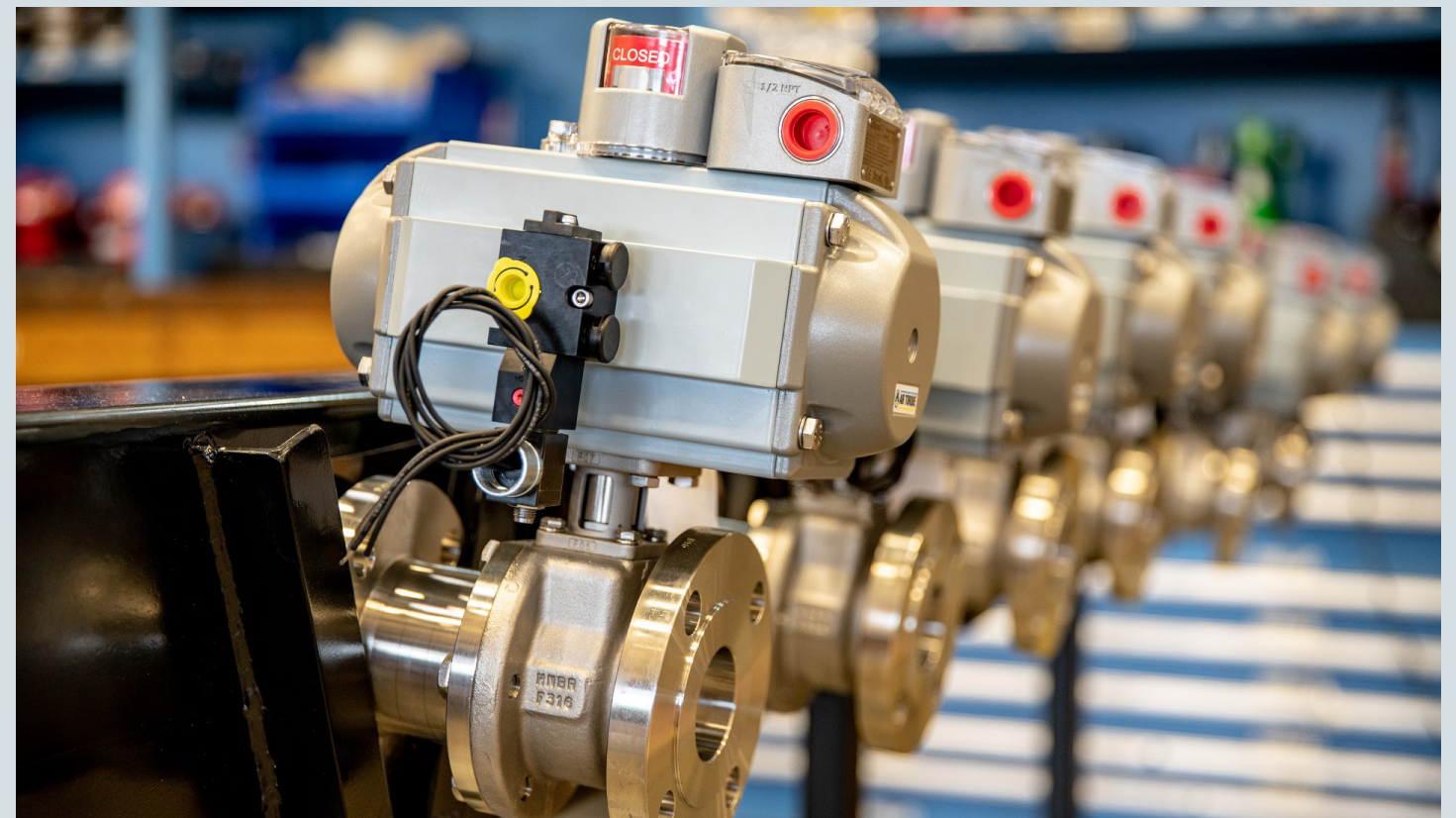


ASSEMBLY

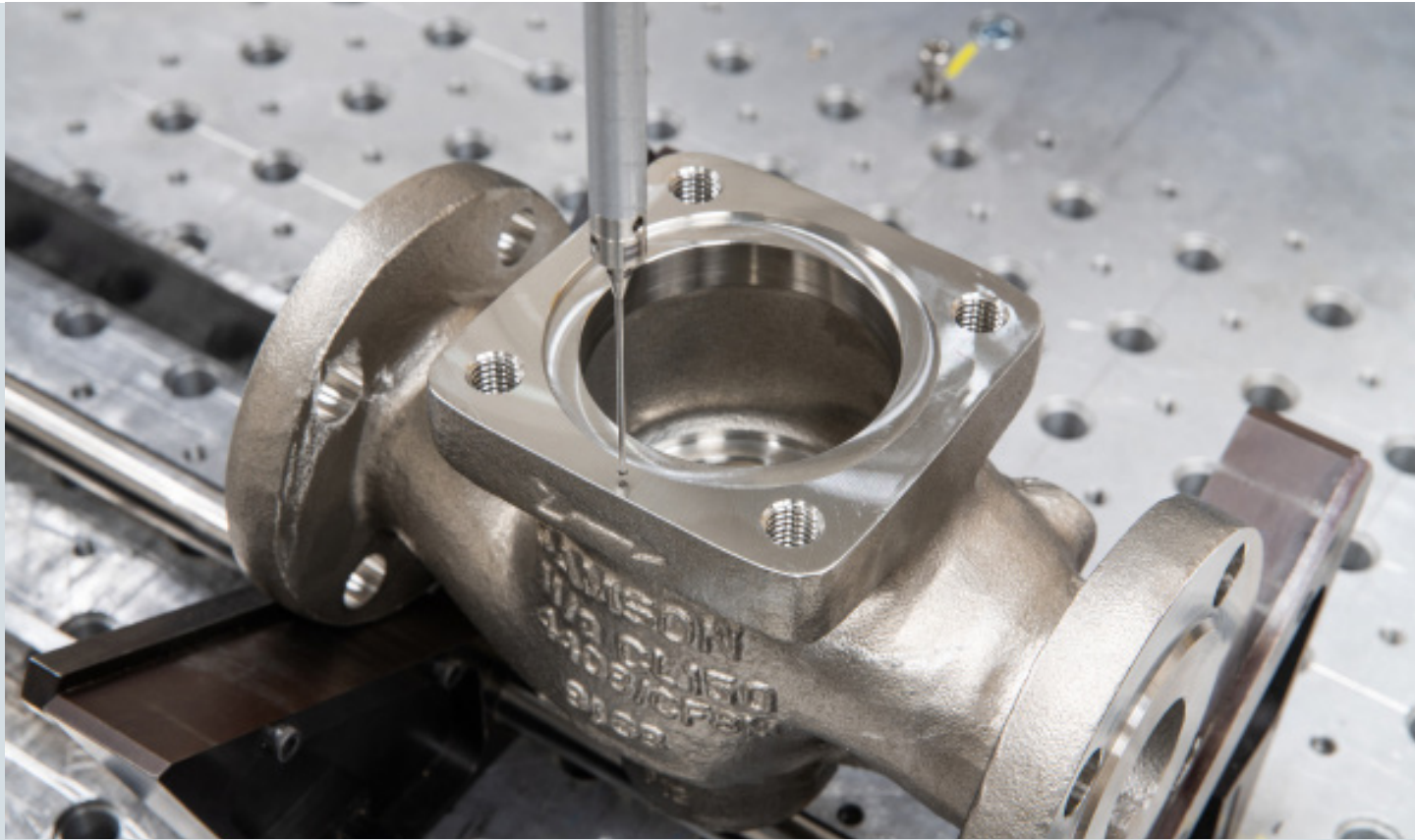
Our inside sales professionals utilize the latest tools, engineering knowledge, and SAMSON's 100 year of experience to provide a valve specification that meets your unique process requirements. These specifications translate into made to order configurations that are expertly assembled and tested by our team of control valve technicians. Our technicians have many years of experience in the valve industry and are familiar with all types of flow control processes.

We also provide specialty testing, coating, painting, and inspection services as required to meet customer demands. Our certified cleaning system and clean assembly area allow us to meet the strict requirements of LOX/GOX and other industrial gases. Our certified staff has a minimum of 5 years experience and special training.

We serve the air separation market and the rapidly growing space industry. Our team is happy to assist you with special cleaning requirements and can quote cleaning and repair of legacy equipment as well.



QUALITY ASSURANCE



Recognizing that investment in quality is the best investment possible, SAMSON's primary objective is to maintain the highest quality standards. Quality, as a symbol of excellence in products and services, is the most important element of the SAMSON company policy.

Of primary importance is the total quality management system, which focuses all efforts solely on the customer. In order to fulfill their expectations, a system of continuous quality control has been established. It greatly exceeds checking the product specifications listed, which is due to the individual competence, commitment and feeling of responsibility of each employee. This system includes such diverse fields of operation as practical design, product certification, incoming inspection, preventative maintenance, workplace safety and environmental protection.

SAMSON's quality management system is modeled over the strict requirements of ISO 9001 and the ASME Boiler Pressure Vessel Code. This certification is constantly monitored, both internally and externally, by auditing

the entire process from beginning to end. During these audits, the most modern measuring and testing methods are used to ensure the constant accuracy of results. In the material testing stage, state-of-the-art methods e.g. as positive material identification, magnetic particle inspection or dye penetrant inspection. At the final testing stage of control valves, computer-driven test rigs are employed, which have been specially developed for this application.

In Canada, Canadian Registration Numbers (CRNs) are required for all pressure vessels and fittings. SAMSON's commitment to product safety and North American code compliance is confirmed by each registration we obtain. We conform to all ASTM, ASME, CSA and FM standards.

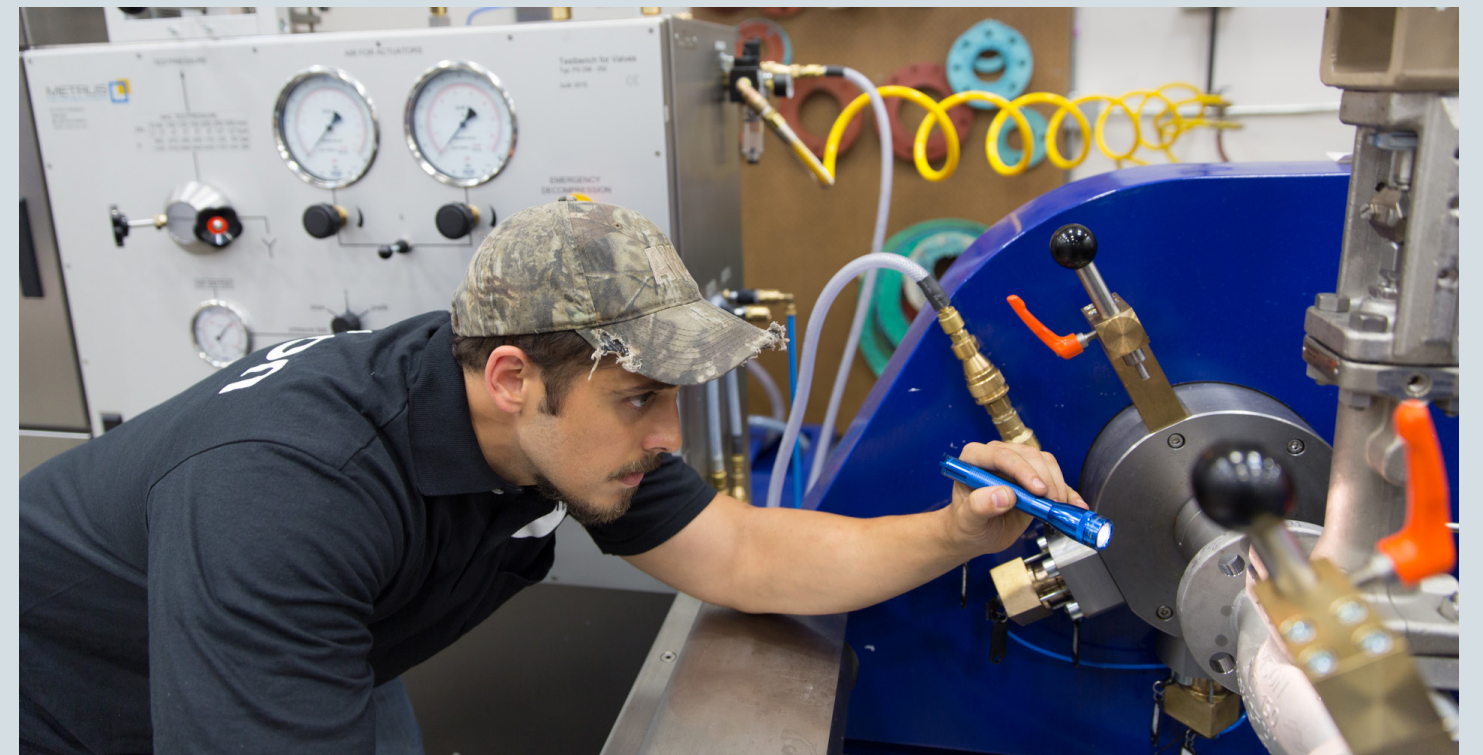
The primary objective of an efficient business process in a manufacturing plant is to ensure constant product quality assurance. This will be reflected by fewer non-conformances, a better product and higher quality of workmanship performed by a more knowledgeable employee, which subsequently means satisfied customers. SAMSON considers its total quality assurance management system the essential philosophy in ensuring a safe and sound future.

CERTIFICATES:

- ISO 9001 Quality Management System (USA)
- ISO 9001 Quality Management System (Germany)
- DIN ISO 45001 Occupational Health & Safety System (Germany)
- ISO 14001 Environmental Management (Germany)
- DIN EN ISO 50001 Energy Management (Germany)

QUALITY:

- To keep your plant running at its best, we offer only QUALITY OEM Parts designed and manufactured by SAMSON.
- Only SAMSON certified parts provided by authorized SAMSON locations meet our strict requirements for design, materials, and tolerances.
- SAMSON Quality Standards and our QC procedures are some of the most rigorous in the industry.

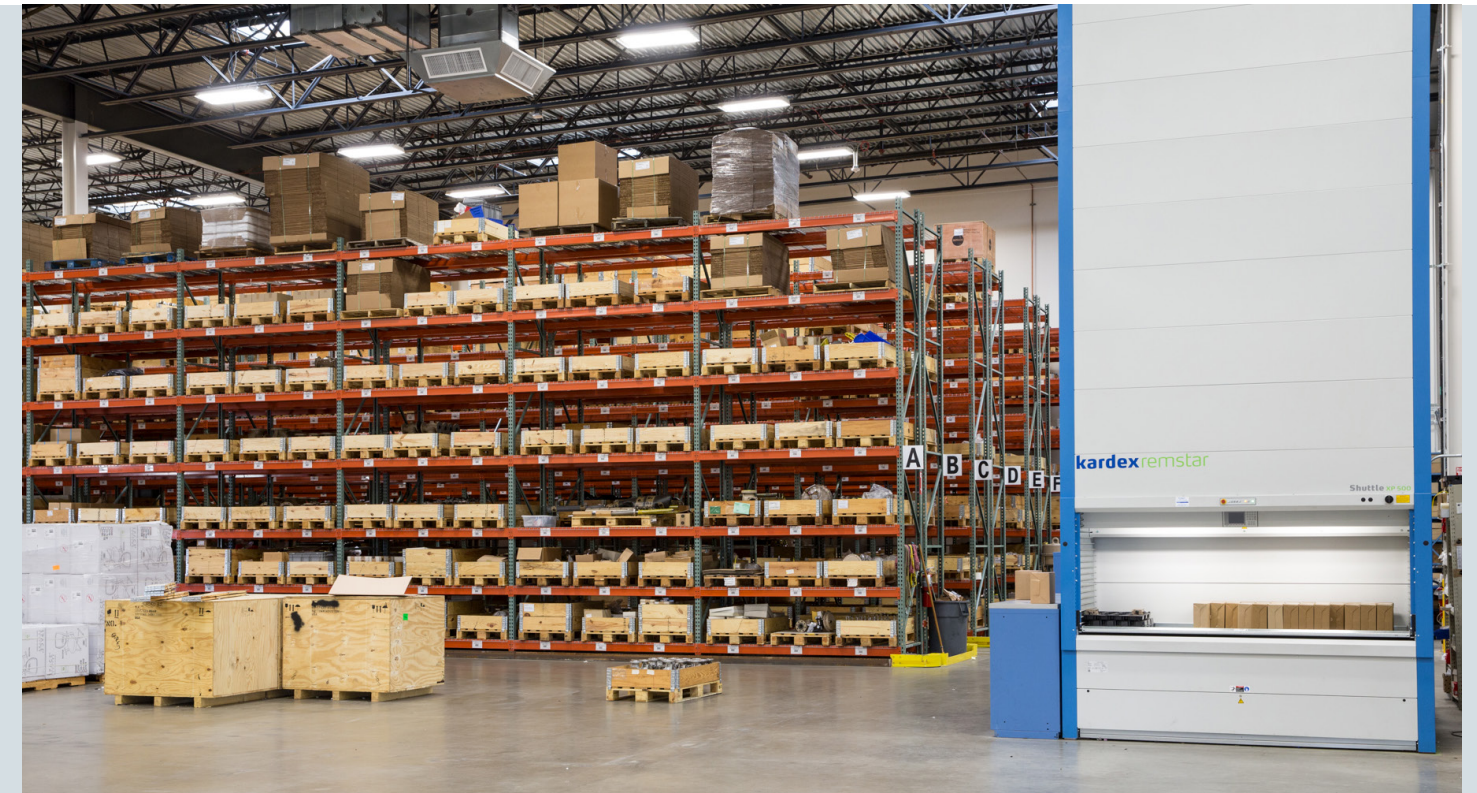


WAREHOUSE

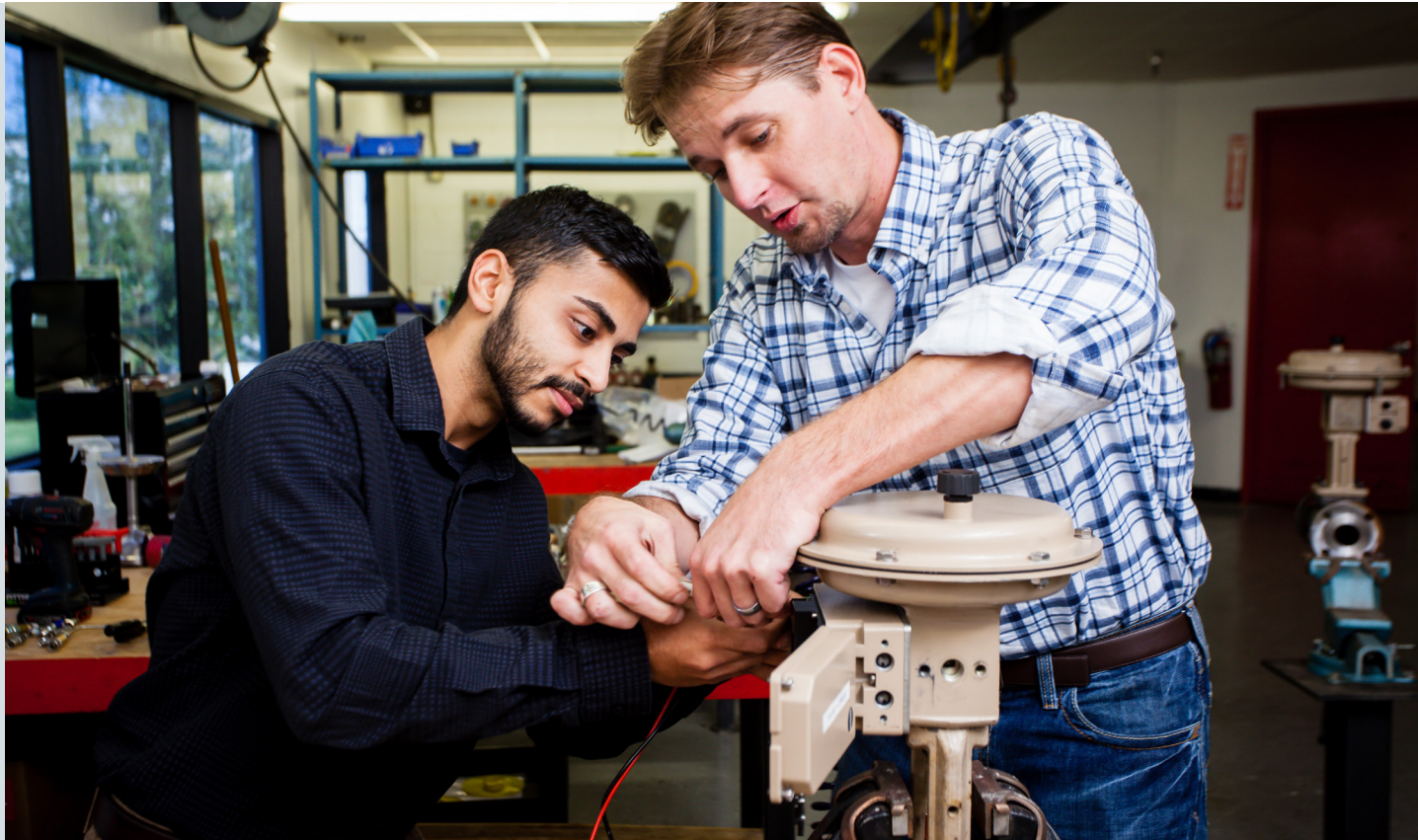
SAMSON maintains large physical inventory around the world to ensure the products you need are just a phone call away. In the United States we maintain region specific inventories at our sales and service offices. These inventories are managed by the local teams in conjunction with local customers to ensure critical spares are available.

Our Baytown production location serves the North American subsidiaries and customers. We maintain a finished goods warehouse that utilizes dense selective pallet rack and vertical lift machines. This allows us to maintain millions of components very close to our operations, from parts weight several grams to parts weighing several tons.

We pride ourselves on high throughput picking with more than 80% of our spare parts orders shipping in 3 days or less and more than 50% of our assembled valve orders shipping in 2 weeks or less. Our supply base is diverse and tightly controlled allowing us to provide full traceability on every piece of metal in the warehouse while meeting your requirements for cost, quality, or country of origin.



AFTER SALES SERVICE AND MAINTENANCE



24 HOUR SERVICE & MAINTENANCE LINE: (281) 383-9859

As a part of the SAMSON After Market Strategy to provide local support across North America, we service all SAMSON Group products. Our technicians can also train maintenance staff on SAMSON products. Service centers are responsible for all product returns, sale of spare parts, and warranty claims. SAMSON provides service facilities strategically located across North America.

START-UP & COMMISSIONING

We can ensure your equipment is properly installed, calibrated, and configured and ready to startup after new construction or after a shutdown or turnaround.

ON-SITE SERVICE AND REPAIR

Our experienced field technicians are trained and certified to diagnose, service and repair on-site on all SAMSON products. All technicians are fully trained and knowledgeable on safety protocols for visiting customer facilities.

Our technicians perform all types of service related work, including but not limited to:

- Seal replacements for external leaks
- Packing replacements or adjustments
- Fugitive emissions enhancements to valves
- Trim replacements
- Retrofitting or modifications to accessories or actuators on valves.
- Diagnosing and correcting electronic devices

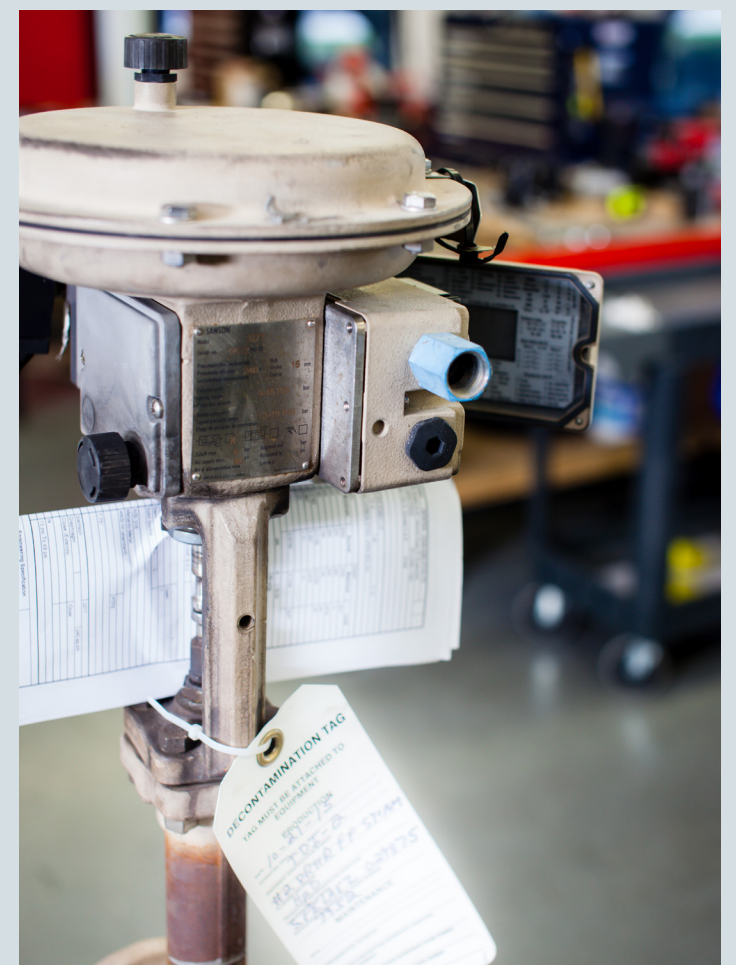
IN-HOUSE SERVICE AND REPAIR

Our in-house facilities provide pick-up and delivery within the local radius of the centers. They are equipped to handle Class A and standard repair for control and on/off valves for all SAMSON Group products.

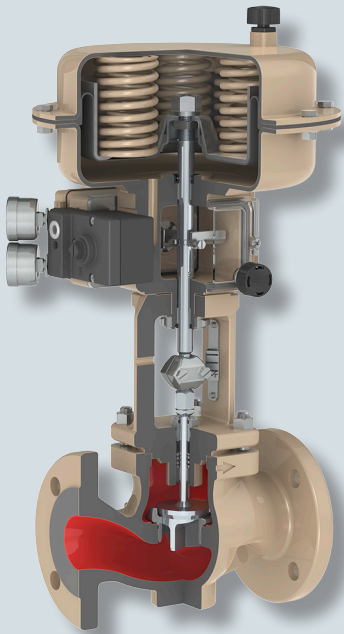
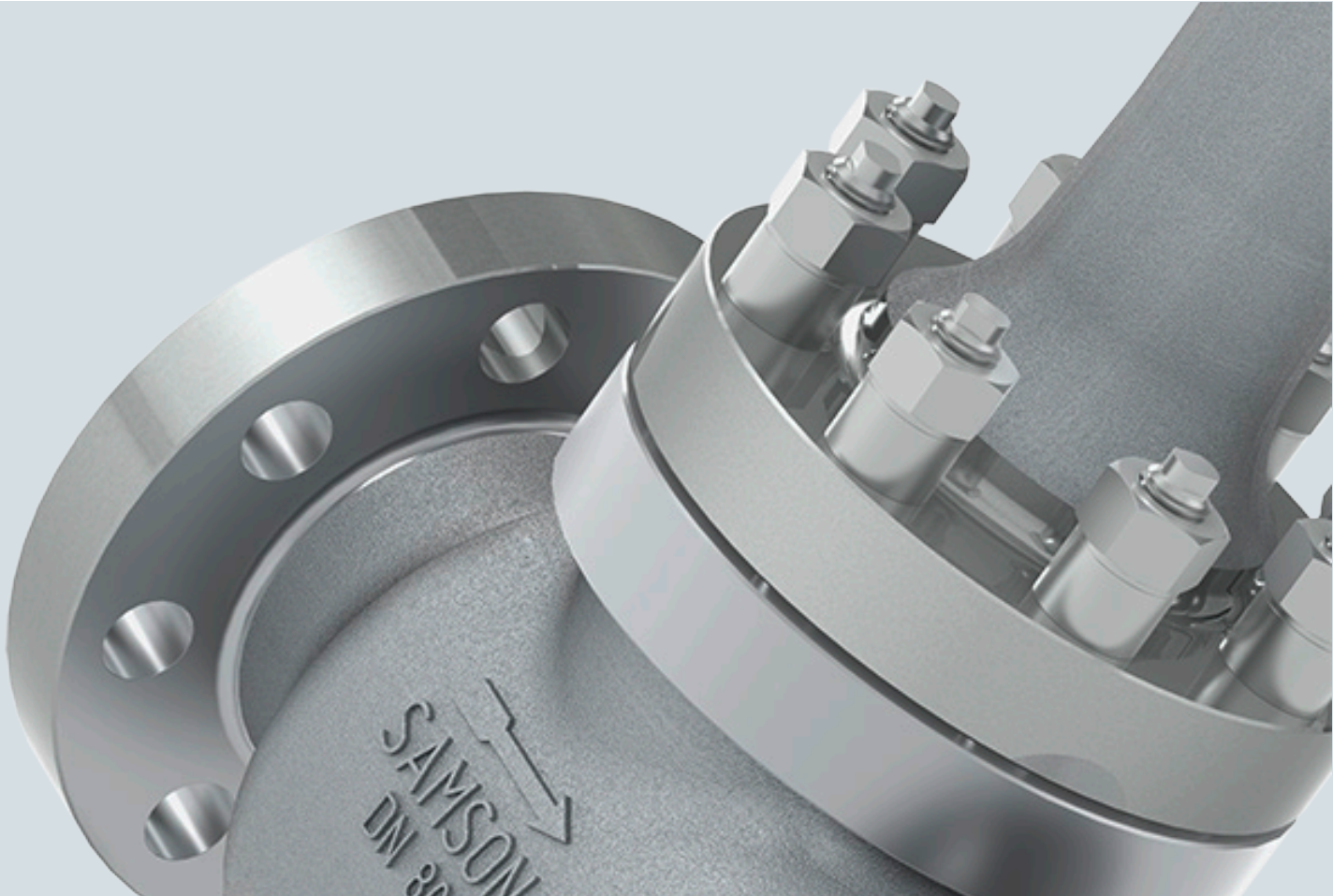
- Pick-up and delivery within local radius of centers
- Class A type repair
- Clean and tear down
- Sandblasting or glass bead blasting, if necessary
- Machine parts, if necessary
- Full repairs and replace with new parts
- Reassemble and recalibrate valves and accessories
- Painting, if necessary
- Perform leakage test
- Positive Material Identification (PMI)
- Standard repair and maintenance

TRAINING

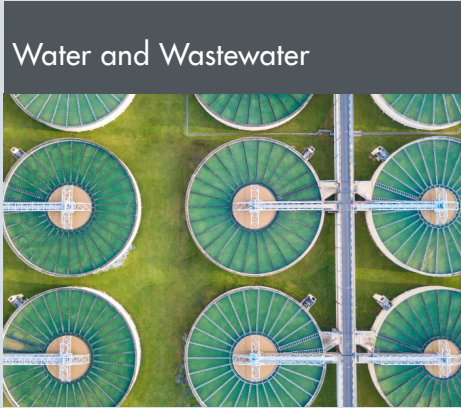
SAMSON provides educational seminars, hands-on training of routine maintenance, positioner calibration, and reversing of actuator for fail-safe modes.



PRODUCTS AND INDUSTRIES



- Globe Valves
- Rotary Valves
- Specialty Valves
- Actuators
- Control Valve Accessories
- Self Operated Regulators



SAMSON AT A GLANCE

STAFF

- Worldwide 4,300
- Europe 3,300
- Asia 500
- Americas 200
- Frankfurt am Main, Germany 1,800

MARKETS

- Chemicals and petrochemicals
- Power and energy
- District heating and cooling, building automation
- General industry
- Industrial gases
- Food and beverages
- Metallurgy and mining
- Oil and gas
- Pharmaceuticals and biotechnology
- Marine equipment
- Water and wastewater
- Pulp and paper

PRODUCTS

- Valves
- Self-operated regulators
- Actuators
- Valve accessories
- Signal converters
- Controllers and automation systems
- Sensors and thermostats
- Digital solutions

SALES SITES

- More than 50 subsidiaries in over 40 countries
- More than 200 representatives

PRODUCTION SITES

- SAMSON Germany, Frankfurt, established 1916
Total plot and production area: 150,000 m²
- SAMSON France, Lyon, established 1962
Total plot and production area: 23,400 m²
- SAMSON Turkey, Istanbul established 1984
Total plot and production area: 11,053 m²
- SAMSON USA, Baytown, TX, established 1992
Total plot and production area: 9,200 m²
- SAMSON China, Beijing, established 1998
Total plot and production area: 10,138 m²
- SAMSON India, Pune district, established 1999
Total plot and production area: 18,000 m²
- SAMSON Russia, Rostov-on-Don, established 2015
Total plot and production area: 5,000 m²
- SAMSON AIR TORQUE, Bergamo, Italy
Total plot and production area: 27,684 m²
- SAMSON CERA SYSTEM, Hermsdorf, Germany
Total plot and production area: 14,700 m²
- SAMSON KT-ELEKTRONIK, Berlin, Germany
Total plot and production area: 1,060 m²
- SAMSON LEUSCH, Neuss, Germany
Total plot and production area: 18,400 m²
- SAMSON PFEIFFER, Kempen, Germany
Total plot and production area: 35,400 m²
- SAMSON RINGO, Zaragoza, Spain
Total plot and production area: 18,270 m²
- SAMSON SED, Bad Rappenau, Germany
Total plot and production area: 10,370 m²
- SAMSON STARLINE, Bergamo, Italy
Total plot and production area: 26,409 m²
- SAMSON VDH PRODUCTS, the Netherlands
- SAMSON VETEC, Speyer, Germany
Total plot and production area: 27,090 m²



SAMSON

PFEIFFER · RINGO · SED · STARLINE · VETEC
AIR TORQUE · CERA SYSTEM · LEUSCH

SAMSON's technology has proven its value worldwide in a variety of industries. We are trusted in many of the world's most challenging applications to achieve precise control with a high level of safety and reliability.

We offer engineered solutions from a single source. With our extensive range of valves, actuators, and accessories we have the right products to suit your requirements.

Our linear and rotary control valves are equipped with SAMSON positioners that allow seamless integration into process control systems.

Continuous investment in research and development allows us to stay at the cutting edge of technology. With over 100 years of experience and expertise, you can count on SAMSON to provide a robust solution for your application.

SAMSON

PFEIFFER · RINGO · SED · STARLINE · VETEC
AIR TORQUE · CERA SYSTEM · LEUSCH

SAMSON Controls Inc.

4111 Cedar Blvd. Baytown, TX 77523-8588 USA

Phone: +1 281-383-3677 · Fax: 281-383-3690



www.samsoncontrols.com



contact-us@samsongroup.com