

Type 3254 Globe Valve

Your contact details:

Title:

Name:

Company:

Customer no.

Street:

ZIP/postal code, city:

Country:

E-mail:

Phone:

Ordering spare parts

The spare parts for Type 3254 are listed on the next pages. This document can also be used for ordering:

1. Fill in your contact data and information on the product.
2. Enter the quantity of spare parts needed.
3. Click [Send form] button to attach the PDF form to an e-mail.
4. Attach additional information (e.g. invoice, photos) to the e-mail, if necessary.
5. Send e-mail to spareparts@samson.de.

Either

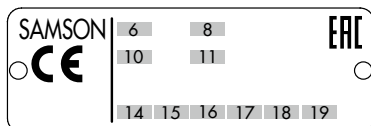
Configuration ID (Var-ID):

or

SAMSON order no.:

Position in order:

or



6

Type designation:

8

Material:

10

Valve size:

11

Pressure rating:

14

Flow coefficient:

15

Characteristic:

16

Seat-plug seal:

17

Seat code:

18

Pressure balancing:

19

Flow divider:

Version

Standard bonnet

With insulating section

With bellows seal

Application

NACE

Oxygen

Industrial gases

Chlorine

Send form

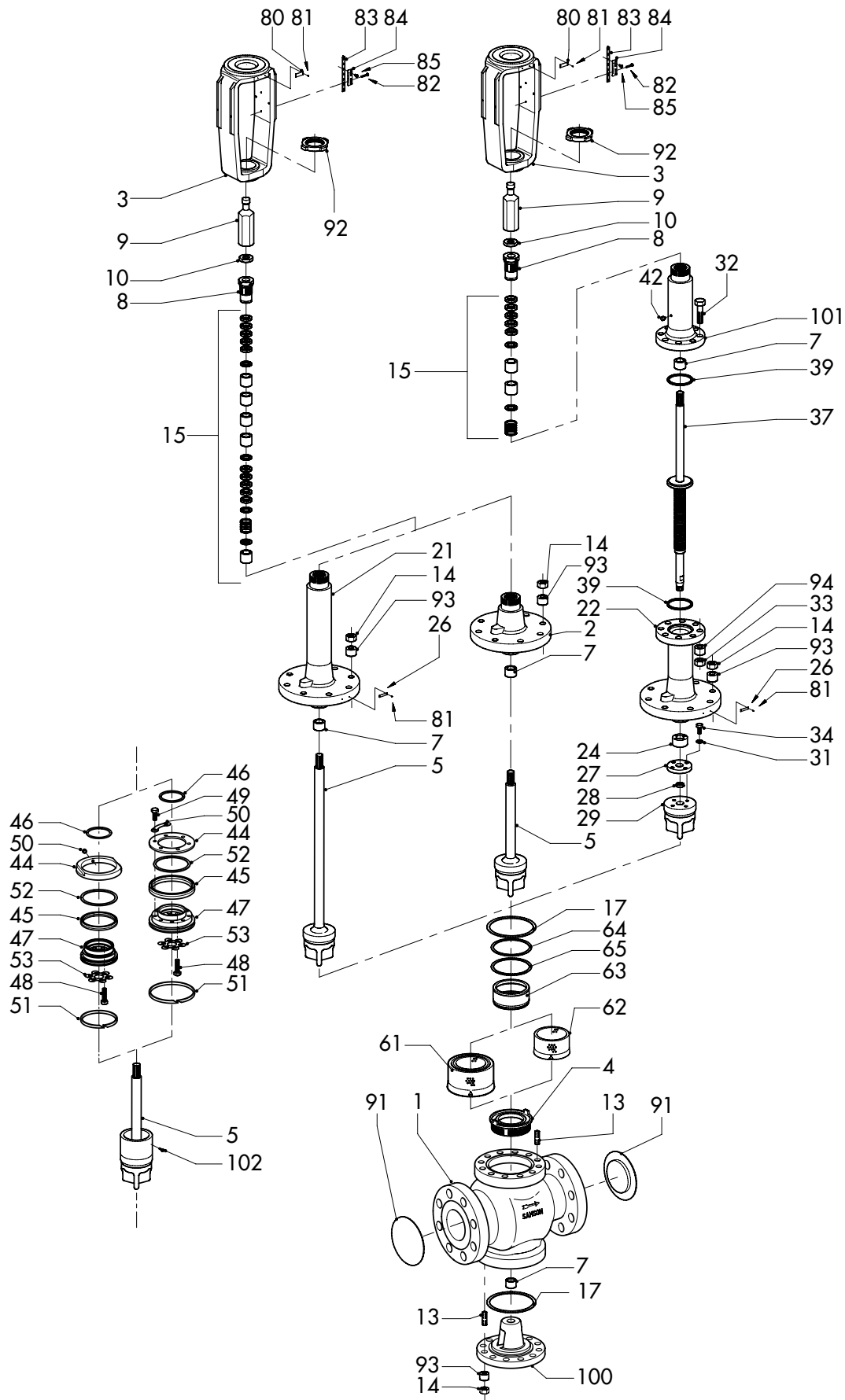
Print form

Clear form

Edition March 2018

Spare parts list

EL 8060 EN



Spare part no.		Qty.	Filled in by SAMSON: item number
1	Body		
2	Bonnet		
3	Yoke		
4	Seat		
5	Plug (with plug stem)		
7	Guide bushing		
8	Threaded bushing (packing nut)		
9	Stem connector nut		
10	Lock nut		
13	Stud bolt		
14	Body nut		
15	Packing		
17	Body gasket		
21	Insulating section		
22	Bellows seal		
24	Guide bushing		
26	Label (bellows seal or insulating section)		
27	Flange		
28	Clamping ring		
29	Plug for version with bellows seal		
31	Washer		
32	Bolt		
33	Nut		
34	Screw		
37	Plug stem with metal bellows		
39	Gasket		
42	Screw plug		
44	Washer ¹⁾		
45	Packing ring ¹⁾		
46	Gasket ¹⁾		
47	Support ¹⁾		
48	Hexagon screw ¹⁾		
49	Hexagon screw ¹⁾		
50	Lock ¹⁾		

Spare part no.		Qty.	Filled in by SAMSON: item number
51	Guide ¹⁾ (several guides only for version with graphite seal)		
52	Ring ¹⁾ (only for version with graphite seal)		
53	Snap ring ¹⁾		
61	Flow divider ST 2 ²⁾		
62	Flow divider ST 1 or ST 3 ²⁾		
63	Ring ²⁾		
64	Gasket ²⁾		
65	Gasket ²⁾		
80	Nameplate		
81	Grooved pin		
82	Screw		
83	Hanger		
84	Travel indicator scale		
85	Screw		
91	Protective cap		
92	Nut		
93	Expansion sleeve		
94	Expansion sleeve ³⁾		
100	Bottom diaphragm case		
101	Bellows cover		
102	Screw with snap ring ¹⁾ (only for version with bellows seal)		

1) Version with balanced valve plug

2) Version with flow divider

3) Only for DN 80 to 150/NPS 3 to 6

Specifications subject to change without notice



SAMSON AG · MESS- UND REGELTECHNIK
Weismüllerstraße 3 · 60314 Frankfurt am Main, Germany
Phone: +49 69 4009-0 · Fax: +49 69 4009-1507
samson@samson.de · www.samson.de

EL 8060 EN

2018-04-06 · English